



## Kilnhurst St Thomas' C of E Primary Academy Newsletter - Friday 20<sup>th</sup> October 2023



THE  
DIOCESE OF  
SHEFFIELD  
ACADEMIES  
TRUST

### Last Day of Term

I can't believe this is the last day of the first term this academic year, it has gone so quick. Sadly, we say goodbye to Mrs Webster today as she leaves St Thomas' to take up her new position as Head of School at one of our DSAT Academies. She will be missed by all and we wish her all the very best for the future. Good Luck Mrs Webster.

A reminder to parents/guardians that the school will re-open on **Tuesday 31<sup>st</sup> October 2023**. The school is closed on Monday 30<sup>th</sup> October for staff training.

The school will also be closed on **Thursday 2<sup>nd</sup> November 2023** to be used as a polling station for local councilor elections. We will re-open on Friday the 3<sup>rd</sup> November 2023 as normal.

I hope you all have a lovey, well-deserved break next week and we look forward to welcoming you back on Tuesday 31<sup>st</sup> October 2023. There are lots of exciting things to look forward to next term, especially with Christmas just around the corner.

Best wishes

Mrs Sherwood, Head of School



### Weekly Class Attendance

FS1 – 92.3%	FS2 – 90.6%	Year 1 – 95%	Year 2 – 97.4%
Year 3 – 98.7%	Year 4 – 88.2%	Year 5 – 97.3%	<b>Year 6 – 98.9%</b>

Congratulations **Class 6**, you are this week's attendance winners, well done.



**ATTENDANCE  
MATTERS!  
Everyday. On-time.**

### Reading Awards

Congratulations to the Tanish in Class 2; who has achieved his Bronze Reading Award. Well done Tanish, you are the first child this academic year to achieve your 50 reads.





**Kilnhurst St Thomas' C of E Primary Academy  
Newsletter - Friday 20<sup>th</sup> October 2023**



THE  
DIOCESE OF  
SHEFFIELD  
ACADEMIES  
TRUST

**Christmas 2023**

We know it's early but many parents/guardians have been asking when certain Christmas Events will be taking place this year so here is a timetable:

Christmas Fayre – Friday 1<sup>st</sup> December 2023 (PM)

Christmas Dinner (whole school) – Wednesday 6<sup>th</sup> December 2023 (free to all children)

Christmas Jumper Day – Wednesday 6<sup>th</sup> December 2023 - £1 donation for Save the Children

**Christmas Performances:**

Key Stage 1 (Classes 1 and 2) – Wednesday 13<sup>th</sup> December 2023 – 2.00pm and 5.00pm

Key Stage 2 (Classes 3, 4, 5 & 6) – Thursday 14<sup>th</sup> December 2023 – 2.00pm and 5.00pm

FS1 and FS2 – Friday 15<sup>th</sup> December 2023 – 9.30am

**Christmas Parties:**

FS1/FS2 – Monday 18<sup>th</sup> December – times tbc

Classes 3 and 4 – Tuesday 19<sup>th</sup> December – PM

Classes 5 and 6 – Wednesday 20<sup>th</sup> December – PM

Classes 1 and 2 – Thursday 21<sup>st</sup> December – PM

Christmas Singalong with Mrs Sherwood – Friday 22<sup>nd</sup> December 2023 at 2.00pm

**Parent Evening / Workshops**

Thank you everyone who attended parents evening over the last few nights. If you were unable to attend and would like to talk to your child's class teacher, please contact them via Dojo to arrange a date and time after half term that is convenient to you both.

Some key dates parental engagement workshops for your diary for next half term:

Wednesday 1st Nov - 3.10-4.00pm - Meet your Child's teacher (Y1-Y6)

The class teachers are leading workshops regarding what is taught in each year group. If you have any particular requests, please Dojo your class teacher and they will lead a workshop on what the majority of parents/ carers are asking for. (It can be reading, maths, writing etc.). I am aware that you may have children in more than one class, unfortunately we are not able to do these on other nights due to staffing. We are planning on leading a workshop every term, so you will get a chance to go to the different classes.

(FS1 and FS2 Stay and Play - dates to be confirmed and shared ASAP)

Friday 10th Nov 9-10am - Coffee morning Meet Mrs Hall, new SENDCO

Friday 24th Nov 9-10am - Internet Safety.

Kind regards  
Mrs Sherwood



Kilnhurst St Thomas' C of E Primary Academy  
Newsletter - Friday 20<sup>th</sup> October 2023



THE  
DIOCESE OF  
SHEFFIELD  
ACADEMIES  
TRUST

**Mobile Phones**

We have noticed lots of children are fetching mobile phones into school recently. Mobile phones should only be brought into school and handed in at reception if your child is walking to and from school alone. Thank you.

**After School Clubs**

The new programme of After School Clubs will be published the first week back after half term. As before, places must be booked via the Arbor app. Please note, if your child is attending Choir After School Club you will NOT need to re-register via Arbor for this club. Thank you.

**Dr Bike Session – 15<sup>th</sup> November 2023**

Please see below a letter from Laurie Butler, the Active Travel Officer at Rotherham MBC. Laurie will be coming into school on the 15<sup>th</sup> November 2023 to do a health check on the children's bikes. If your child would like to take part, please pick up a form at the School office, complete and return. Please note, Laurie will be unable to do a bike check without the completed form. Thank you.



Dear Parent/Guardian,

On the **15<sup>th</sup> November** we are having a 'Dr Bike Session'

Any pupils that cycle to school will get a free health check for their bike. There are a limited number of places so make sure you book your space.

**So what does that involve?**

- Every bike will be checked over to ensure that it is safe to ride
- Bikes will have tyre pumped up and chains lubed
- Nuts and bolts will be checked for tightness
- Brakes will be tightened and checked

**But...**

- We are not a bike shop! In some cases we might replace some parts. But with the time and resources we have, some things are not possible to fix

So even if you can't ride to school; push your bike in and hopefully you will be able to ride it home

We look forward to seeing you there.

**Laurie Butler** Active Travel Officer Rotherham  
In partnership with **Rotherham Metropolitan Borough Council**



## Kilnhurst St Thomas' C of E Primary Academy Newsletter - Friday 20<sup>th</sup> October 2023



THE  
DIOCESE OF  
SHEFFIELD  
ACADEMIES  
TRUST

### Road Safety

We received a call from a member of the public on Wednesday morning to say a child from our school had run out onto the road outside the John Bull Shop. The person said she almost hit the child and was very upset. Can you please advise your children to take care when crossing the roads to school. This is a particularly dangerous place to cross and we would advise everyone to use the school crossing patrol at the bottom of Birdwell Road. Thank you.

### Children in Need – Friday 17<sup>th</sup> November 2023

Children in Need will take place this year on Friday 17<sup>th</sup> November 2023. As a school we always try and support this amazing charity. Children may come to school in non-uniform for a £1 donation. We previously asked children to wear spots but we don't want to put pressure on parents/guardians so we have decided to do just a non-uniform for all. Thank you.



### FS2 and Year 6 Height and Weight Measurement

Every year, the National Child Measurement Programme (nursing team) come into school and do height and weight measurement checks for all pupils in FS2 and year 6. The measurements are used to calculate weight status, e.g. overweight, healthy weight or underweight. They collect this information as part of an ongoing national programme to collect trends.

Children are measured fully clothed, except for their coats and shoes, in a private space away from other pupils. The wellbeing of children and families is very important to us and measurements are conducted in a compassionate way, in private and away from other children.

Individual results are not shared with your child or their school. Once the measurements have been taken, you will receive a text notification. If you would **not** like your child to take part then you will need to contact the **Public Health Nursing Team on 01709 423333 by 14th October 2023**. NB: Children will not be made to take part on the day if they do not want to.

Parents/Guardians will be notified once the date is confirmed as to when the nursing team will be in school.

### Back Gates to School (Celandine Rise Entrance)

Can we please ask that parents/guardians do not use the back gates other than during morning drop off and afternoon pick up (8.40am to 9.00am / 2.55pm to 3.10pm). Please use the main entrance during all other times. Thank you.





**Kilnhurst St Thomas' C of E Primary Academy  
Newsletter - Friday 20<sup>th</sup> October 2023**



THE  
DIOCESE OF  
SHEFFIELD  
ACADEMIES  
TRUST

**Reporting Absences**

If your child is going to be absent from school, can we please remind parents/guardians to contact the school office before 9.00am. If you leave a voicemail, please let us know the reason why your child will be absent. Can we please ask that you don't report absences via DOJO messages. As per our Attendance Policy, if we do not hear from parents/guardians by 10.30am, Mrs Sherwood and Mrs Neal will be forced to do a home visit. Thank you for your co-operation. School Telephone Number is 01709 570297.

**Lost Property**

Our lost property box is yet again over-flowing with items. Can we please ask that parents/guardians put their child's name on the labels inside coats / cardigans, jumpers etc. so we are able to return them to the children. If you wish to look through the lost property box, you can do so before morning registration and afternoon pick up. The box is located on the corridor outside Class 4 (inside school). Please come through reception to access. Thank you.



**Date for your Diary - Autumn Term 2**

30<sup>th</sup> October 2023 – INSET Day – School Closed  
31<sup>st</sup> October 2023 – School re-opens  
31<sup>st</sup> October 2023 – PC Paul – School Assembly – Fireworks and Bonfire Safety  
1<sup>st</sup> November 2023 – Meet your Class Teacher – times tbc  
10<sup>th</sup> November 2023 - 9.00am - Coffee morning Meet Mrs Hall, new SENDCO  
13<sup>th</sup> November 2023 – Wear odd socks day - Anti-bullying week  
15<sup>th</sup> November 2023 – Dr Bike in School  
16<sup>th</sup> November 2023 – 9.00am – Coffee Morning – Sleep Workshop with the EWO  
17<sup>th</sup> November 2023 – Children in Need  
24<sup>th</sup> November 2023 – Internet Safety Training – times tbc  
1<sup>st</sup> December 2023 – Christmas Fayre  
6<sup>th</sup> December 2023 – Christmas Dinner and Christmas Jumper Day  
13<sup>th</sup> December 2023 – KS1 Performance - 2.00pm and 5.00pm  
14<sup>th</sup> December 2023 – KS2 Performance – 2.00pm and 5.00pm  
15<sup>th</sup> December 2023 – FS1/FS2 Nativity – 9.30am  
18<sup>th</sup> December 2023 – FS1/FS2 Christmas Party  
19<sup>th</sup> December 2023 – Classes 3 and 4 Christmas Party  
20<sup>th</sup> December 2023 – Classes 5 and 6 Christmas Party  
21<sup>st</sup> December 2023 – Classes 1 and 2 Christmas Party  
22<sup>nd</sup> December 2023 – School finishes at 3.00pm for Christmas Holidays





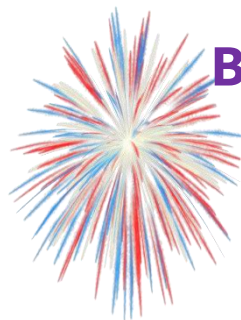
Kilnhurst St Thomas' C of E Primary Academy  
 Newsletter - Friday 20<sup>th</sup> October 2023



THE  
 DIOCESE OF  
 SHEFFIELD  
 ACADEMIES  
 TRUST

**New Menu – Week 2 - W.C. 30<sup>th</sup> October 2023**

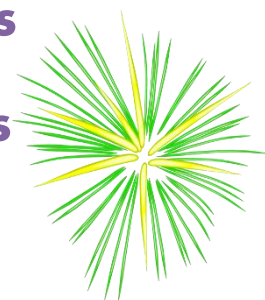
WEEK 2	PLANET GREEN MONDAY	TUESDAY	WEDNESDAY	THURSDAY	FRIDAY
Pip's Planet Friendly Option	Loaded Cheesy Bean Hot Pitta Parcel	Plant-based Bolognese Pasta with Lentils, Peppers & Basil	Quorn Sausage Toad in the Hole, Roast Potatoes & Gravy	Homemade Macaroni Cheese	Cheese & Onion Pastry Roll & Chips
Option Two	Homemade Cheese & Tomato Pizza & Garlic Bread	Hearty Pasta Bolognese with Peppers	Toad in the Hole, Roast Potatoes & Gravy	Mexican Style Chicken, Bean & Sweetcorn Burrito	Cod Fish Fingers & Chips
Vegetables	Sweetcorn, Peas	Green Beans, Carrots	Cauliflower, Seasonal Greens	Mixed Vegetables, Sweetcorn	Baked Beans, Peas
Hot Pasta		Pasta & Cheese Sauce		Pasta with Italian Tomato & Basil Sauce	
Sandwiches	Freshly Made Sandwich with Cheddar, Tuna Mayonnaise or Ham				
Jacket Potatoes	Jacket Potato with Tuna Mayonnaise or Cheese or Beans				
Dessert	Apple & Sultana Crumble Bar	Homemade Lemon Cake & Custard	Banana Cake & Fruit Slices	Chocolate Cookie	Fruity Strawberry Jelly



**Bonfire Night Spectacular**  
**Monday 6<sup>th</sup> November**  
**Bonfire Bangers**

**Pork Hot Dog**  
**Or**  
**Vegetarian Hot Dog**

**Campfire Potato Wedges**  
**&**  
**Bang Bang Baked beans**



**Dessert**  
**Chocolate Sponge**  


---

**Served With**  
**Hot Chocolate Sauce**



# Kilnhurst St Thomas' C of E Primary Academy Newsletter - Friday 20<sup>th</sup> October 2023



THE  
DIOCESE OF  
SHEFFIELD  
ACADEMIES  
TRUST

## St Thomas' C of E Primary Academy Kilnhurst

### School Calendar for the Academic Year 2023/24

September (20 Days)							October (20 Days)							November (19 Days)						
M	T	W	T	F	S	S	M	T	W	T	F	S	S	M	T	W	T	F	S	S
				1	2	3							1			1	2	3	4	5
4	5	6	7	8	9	10	2	3	4	5	6	7	8	6	7	8	9	10	11	12
11	12	13	14	15	16	17	9	10	11	12	13	14	15	13	14	15	16	17	18	19
18	19	20	21	22	23	24	16	17	18	19	20	21	22	20	21	22	23	24	25	26
25	26	27	28	29	30		23	24	25	26	27	28	29	27	28	29	30			
							30	31												
December (16 Days)							January (18 days)							February (15 days)						
M	T	W	T	F	S	S	M	T	W	T	F	S	S	M	T	W	T	F	S	S
				1	2	3	1	2	3	4	5	6	7				1	2	3	4
4	5	6	7	8	9	10	8	9	10	11	12	13	14	5	6	7	8	9	10	11
11	12	13	14	15	16	17	15	16	17	18	19	20	21	12	13	14	15	16	17	18
18	19	20	21	22	23	24	22	23	24	25	26	27	28	19	20	21	22	23	24	25
25	26	27	28	29	30	31	29	30	31					26	27	28	29			
March (17 Days)							April (16 Days)							May (18 Days)						
M	T	W	T	F	S	S	M	T	W	T	F	S	S	M	T	W	T	F	S	S
				1	2	3	1	2	3	4	5	6	7			1	2	3	4	5
4	5	6	7	8	9	10	8	9	10	11	12	13	14	6	7	8	9	10	11	12
11	12	13	14	15	16	17	15	16	17	18	19	20	21	13	14	15	16	17	18	19
18	19	20	21	22	23	24	22	23	24	25	26	27	28	20	21	22	23	24	25	26
25	26	27	28	29	30	31	29	30						27	28	29	30	31		
June (20 Days)							July (16 Days)							August						
M	T	W	T	F	S	S	M	T	W	T	F	S	S	M	T	W	T	F	S	S
					1	2	1	2	3	4	5	6	7				1	2	3	4
3	4	5	6	7	8	9	8	9	10	11	12	13	14	5	6	7	8	9	10	11
10	11	12	13	14	15	16	15	16	17	18	19	20	21	12	13	14	15	16	17	18
17	18	19	20	21	22	23	22	23	24	25	26	27	28	19	20	21	22	23	24	25
24	25	26	27	28	29	30	29	30	31					26	27	28	29	30	31	

Denotes Bank Holidays

Denotes School Holidays

194 days – including 5 days to be taken as professional development days for teaching staff

Denotes Inset days (x 5)

Polling Station